



# **Military Relocation 2011 Programmatic Agreement Semi-Annual Report July 1, 2022 – December 31, 2022**



**J-008 Fire Station under Construction at Marine Corps Base Camp Blaz, Guam**

**Prepared by Marine Corps Base Camp Blaz Public Works Department  
May 2023**



**Section I shall include a list of all individual projects (as identified in Stipulation V.A) completed within the six-month reporting period that were determined to qualify for findings of No Historic Properties Affected or No Adverse Effect on Historic Properties. This list shall include the date of approval by the CRM and description of the project scope.**

- J-609 Apra Harbor Embarkation Facility (RC 2020-0686)
  - No historic properties affected, pending concurrence from SHPO
  - See Section II for additional information
- J-017-V Waterline Connect (RC 2007-0782)
  - No historic properties affected, pending concurrence from SHPO
  - See Section III for additional information
- H-279 Andersen Housing Demolition and Construction, PA memo for APE expansion (No Historic Properties Affected)

**Section II shall include a list of all individual projects (Stipulation V. completed within the six months for which supplemental consultation under this PA has been conducted, including the determination of effect and any mitigation measures identified.**

J-609 Apra Harbor Embarkation Operation (RC 2020-0686)
<p>Project proposes to construct an embarkation facility that includes road improvements and paving, utility connections, construction of two small buildings (less than 20 m<sup>2</sup> each) and a larger warehouse constructed on driven piles.</p> <ul style="list-style-type: none"> <li>• 6/11/2022: Delivered Supplemental PA Memo 1 to SHPO with determination of <u>No Historic Properties Affected</u></li> <li>• 10/19/2022: Received non-concurrence from SHPO               <ul style="list-style-type: none"> <li>○ Cited presence of cultural features on 1913/14 map</li> <li>○ Stated that previous investigations were outdated and inadequate</li> <li>○ Recommended archaeological monitoring</li> </ul> </li> <li>• 2/9/2023: MCBCB responded to SHPO with detailed history of post-WWII construction of Apra Harbor and development of the surrounding area. MCBCB provided:               <ul style="list-style-type: none"> <li>○ Map indicating distribution of fill across the area (provided by SHPO in their comments)</li> <li>○ 1951 air photo showing clearing, grading, filling and construction in the area (subsequently demolished)</li> <li>○ Welch 2010 report showing locations of archaeological trenching (N=22) in the area,</li> <li>○ Trench profiles (Appendix in Welch 2010) that extended to a depth of 5-6 meters in many of the trenches indicated presence of up to 3 meters of fill over a layer of sand containing marine shells indicative of mangrove marsh habitat over gley.</li> <li>○ Archaeological monitoring of the trenches (Welch 2010) reported that no cultural material (with the exception of metal and glass fragments in the fill) was observed</li> <li>○ Based on this evidence, MCBCB concluded that the potential for existence of any remains of 1913-14 cultural landscape is unlikely and archaeological monitoring is not warranted in this area</li> </ul> </li> <li>• MCBCB maintained that the determination of <u>No Historic Properties Affected</u> still applies.</li> </ul>



- 2/23/2023 SHPO responded to MCBCB comments, rejecting the evidence presented by MCBCB in archival maps and photos and in trench profiles in our response to SHPO comments.
- The State Archaeologist repeated his statement that “a monitoring plan is necessary, if not a total resurvey of the area.”
- 2/27/2023: MCBCB consulted with SHPO regarding their concerns; MCBCB is preparing a response to address comments but will invite SHPO to invoke Stipulation XIII due to lack of resolution.

**Section III shall include any additional coordination under this PA initiated (Stipulations I.D and I.E) within the past six months as a result of changes or additions to the Undertaking. DoD shall provide a summary showing the project name, date of adverse effect notification and status of consultation.**

#### **J-017-V Waterline Interconnect (RC 2007-0782)**

Proposed project to install a waterline along Route 3, largely within J-001B footprint.

- 7/8/2022: PA Memo 1 delivered to SHPO with determination of No Historic Properties Affected
- 9/2022: DON revised the project design
- 10/19/2022: SHPO non-concurrence, recommended monitoring
- 3/7/2023: MCBCB submitted a revised PA Memo to SHPO. Deadline for review is April 21, 2023

#### **H-279 Andersen Housing Demolition and Construction, Revised PA Memo (RC 2016-0001)**

Proposed action expanded the Area of Potential Effects (APE) to accommodate installation of utility lines.

- 5/25/2022: Supplemental PA Memo delivered to SHPO with finding of No Historic Properties Affected
- 7/1/2022 Received non-concurrence from SHPO, stating that an historic building is in the expanded APE
- 7/21/2022 MCBCB responded to SHPO, provided clarification that the building in question is covered by the Program Comment for Cold War Era Unaccompanied Personnel Housing. As such, further consideration under Section 106 is not required.
- MCBCB maintains the finding of No Historic Properties Affected

**Section IV will provide a summary of progress on the implementation of mitigation measures specified in Stipulations VI, VII and VIII**

#### **Stipulation VI.A.1: Mitigation Plans**

No mitigation plans were submitted for review during the reporting period

#### **Stipulation VI.A.2: Data Recovery Reports**

##### **P-715 Live Fire Training Range Complex (RC 2012-10751)**

- 12/22: Draft data recovery report received by Camp Blaz.



- Report is in four volumes
  - Volume 1: Monitoring Report
  - Volume 2: Data Recovery Report
  - Volume 3: Recovery and analysis of Human Remains
  - Volume 4: Discussion
  - Report is currently with Camp Blaz for internal review.

**P-735 Multi-purpose Machine Gun Range (RC 2013-1101)**

- 8/1/22: Draft data recovery report transmitted to SHPO with comments due 9/15/22. No comments received from SHPO.

**Stipulation VI.B: Public Education and Interpretation**

- No additional educational booklets were produced during the reporting period. Digital copies of existing booklets can be obtained from the Navy Cultural Resources Information website (<https://pacific.navfac.navy.mil/About-Us/Cultural-Resources-Information/>). When you reach the website, click “About Us” to access Cultural Resource information, including opportunities to comment on PA Memos.
- Construction of a memorial monument at the location of burials that were preserved in place was completed at the HR-1 location in J-001B.
- A marker identifying the location of the Magua’ Site has been installed at the location selected by SHPO.
- Display cases and shelving for an indoor display of archaeological and educational material at the Camp Blaz Visitor Center is proceeding.
- 1/19/2023: A Public Open House was held at the recently completed Guam Cultural Repository. The open house provided an opportunity for the public to see the measures taken to protect the cultural and natural resources in and around the construction of Camp Blaz.

**Stipulation VI.D.1: Cultural Resource (CR) Awareness**

- 614 contractors received CR training between July 1 and December 31, 2022

**Stipulation VI.D.2: Access to Historic Properties on DoD Lands**

- The Public Access Plan was suspended during the height of COVID. It is being overhauled to provide a more robust program headed by a full-time coordinator.
- Outgoing Access Plan Coordinator (APC) has been working with Naval Base Guam (NBG) leadership and the National Park Service (NPS) to schedule regular bus tours to NBG Munitions Storage Area sites.
- Note that the sites on NBGMS, particularly sites with latte sets, are among the best preserved on the island.
- See Section VIII for more information about the Public Access Plan.

**Stipulation VI.F: Professional Oversight**

- Camp Blaz archaeologists consult regularly with Naval Base Guam and Andersen Air Force Base Cultural Resource Managers (CRM) and with the Joint Region Marianas CRM to ensure oversight of actions and mitigations related to the Marine Corps Relocation. Camp Blaz



archaeologists are also in consultation with Naval Facilities Engineering Systems Pacific (NAVFAC PAC) archaeologists by phone or email daily.

- Camp Blaz archaeologists conduct site visits to inspect progress, respond to contractor requests for information and report to the Contract Officer's Representative on any issues.
- Camp Blaz archaeologists communicate with SHPO and the State Archaeologist regarding discoveries and requests for information.
- There are currently three Secretary of the Interior (SOI) qualified archaeologists at Camp Blaz; one of which has accepted the offer to fill the position to be vacated by the retiring Cultural Resources Manager. Another archaeologist (GS-11) has accepted a position schedule to on-board in the 3<sup>rd</sup> Quarter FY23.

#### **Stipulation VI.G: Update of Historic Properties Information**

- Contracts for archaeological investigations, whether for surveys or data recovery, require that the contractor prepare a new or updated (as appropriate) Guam Historic Property Inventory (GHPI) form for the property and include evaluation for National Register Criteria for listing to the National Register of Historic Places (NRHP).
- GHPI numbers are issued by SHPO.
- P-608 (Earth covered magazines) Survey Report included new and revised site forms for known sites based on survey results.
- SHPO provided GHPI numbers for new sites discovered at P-745 Relocation of US F&W Facilities at Ritidian.
- MCBCB provided Requests for Assistance to SHPO for assignment of GHPI numbers for new sites or revised site boundaries for previously documented sites.

#### **Guam-Specific Mitigations (Stipulation VII)**

##### **Stipulation VII.B.1: Signage at South Finegayan**

- While military Relocation action (housing construction) is no longer proposed at South Finegayan, the requirement to update the interpretive signage at the South Finegayan Latte Stone Park remains a requirement per the 2011 PA.
- Plans for the interpretive signage and rehabilitation of the area around the latte set including removal of dead trees, grass cutting, etc., have been completed and submitted for approval.
  - The interpretive signage will incorporate information obtained during a 2016 NBG investigation of the features around the standing latte set
  - The South Finegayan Latte Park boundary will be expanded and delineated by a decorative fence
  - There is also opportunity to manage this requirement with other interpretive needs or initiatives beyond the 2011 PA
  - Currently, available funding is limited to the signage update in the 2011 PA
  - Additional funding is being requested to include rehabilitation of the area surrounding the latte
- Access to South Finegayan is currently restricted due to military use of the area; however, opportunities for visiting the latte park will be available in the future, subject to application through the Public Access Plan.

##### **Stipulation VII.B.2: Maintain Access to Southern Mountain Trail**



- There have been no actions restricting access to the Southern Mountain Trail.

#### **Stipulation VII.C.2: Assist SHPO with Update of Guam Historic Preservation Plan**

- Requirement is for DoD to support SHPO's Guam Historic Preservation Plan (HPP) in accordance with SOI Standards and Guidelines for Preservation Planning as part of its five-year planning cycle and continue to do so every 5 years for the life of this agreement
- SHPO is completing the HPP and anticipates printing soon.

#### **Stipulation VII.C.2: Prepare/Update Stand-alone Guam Synthesis**

- Requirement is to support the Guam Historic Preservation Plan by producing a stand-alone synthesis of inventory and evaluation efforts
- The initial Synthesis, published in 2019, consisted of a two-volume set that started after Guam SHPO completed the Historic Preservation Plan in 2017.
- The Synthesis update was awarded 28 July 2022 and will provide an opportunity to include new information from military relocation investigations, particularly those on the Northern Plateau. Several improvements have been incorporated in response to comments received:
  - Updated GIS component
  - Increased collaboration with Guam SHPO
  - Public versions of the Synthesis
  - Interpretive component that includes an interpretive booklet and portable display kit with lesson plans for presentations

#### **Stipulation VII.C.3: National Register of Historic Places (NRHP) Nominations**

This stipulation requires that DoD prepare at least two NRHP nominations per year for historic properties on DoD land.

- Camp Blaz is taking measures to streamline the routing systems for nominations for both Navy and Air Force in an effort to speed up the review process. Thirteen nominations are planned to be presented to JRM for delivery to NAVFAC HQ for signature and delivery to the Keeper in 2023.
- Planning for 2023 Nominations is currently in progress (see details in Table 1).

Table 1. STATUS OF NRHP NOMINATIONS AS OF DECEMBER 31, 2022 (\*have Brochure/Pamphlet)

Calendar Year	Property Name	Status
2012	Talisay (66-02-2366)*	Listed in NRHP
2012	Tumon-Maui Well (66-01-2278)*	Listed in NRHP
SHPO	Mahlac Pictograph Cave (66-02-1985) By SHPO*	Listed in NRHP
2013	Dobo Springs Latte Set Complex (66-02-0151)*	Listed in NRHP
2013	North Field AAFB*	North Field nomination was prepared by NAVFAC PAC and NAVFAC Marianas at recommendation of AAFB CRM, based on Historic American Engineering Record completed as partial mitigation



		of adverse effects on North Field. Nomination was ultimately not submitted.
2014	Dådi Beach Defensive Bunker (66-02-1303)*	Listed in NRHP
2014	Påpa'etnon (66-02-2330)*	Pending routing through JRM
2015	Maulap River Complex (66-02-1978)*	Keeper returned nomination with minor comments. Nomination will be re-submitted.
2015	Sagåyan Atmagosa (66-02-2337)*	Pending routing through JRM
2016	Torres Farmstead (66-08-2717)*	Pending routing through JRM
2016	Tarague Well #4 (66-07-1586)*	Pending routing through JRM
2017	Songsong Må'gas (66-09-1935) & Guekon Yu'us (66-09-1940)	Pending routing through JRM
2018	Arizona Room, AAFB (66-07-1588)*	Completed SHPO review, provided traditional name of "Taioppe"- with Camp Blaz for routing through JRM.
2018	Straggler's Cave AAFB (66-08-1515)*	Completed SHPO review, with Camp Blaz for routing through JRM.
2018	Block Rock Shelter, AAFB (66-08-1516)*	Completed SHPO review, with Camp Blaz for routing through JRM.
2019	Pugua Point site (cut steps) proposed by SHPO	Completed SHPO review, with Camp Blaz for final review.
2019	Pugua Point site (Site 13) proposed by SHPO	Completed SHPO review, with Camp Blaz final review
2019	JRM Conference Table Constructed for a March 1967 conference between civilian and military leaders of US and South Vietnam and recently featured in a documentary hosted by JRM PAO and Guam Parks and Historic Sites historian.	Completed SHPO review, with Camp Blaz for routing through JRM.
2020	66-02-2341 contains two latte sets and has a Spanish component	Field work completed in 2021 due to COVID delays. Received Draft Feb 2022; internal review at Camp Blaz
2020	66-02-2344 contains two latte sets and two associated quarries	Field work completed in 2021 due to COVID delays. Received Draft Feb 2022; internal review at Camp Blaz
2020	66-02-2339 is a single latte set with associated rock shelter	Field work completed in 2021 due to COVID delays. Received Draft Feb 2022; internal review at Camp Blaz



2021	66-02-2348 is a Latte Period site in Naval Base Guam Munitions Storage Area.	Fieldwork completed; Received drafts March 2022; internal review at Camp Blaz
2021	66-02-2350 is a Latte Period site in Naval Base Guam Munitions Storage Area.	Fieldwork completed; Received drafts March 2022; internal review at Camp Blaz
2022	Camp Blaz proposed nomination of three sites in the Tarague Embayment, a fourth site at the Live Fire Training Range Complex, plus a Multiple Property Nomination. This is a thematic nomination for upland agricultural sites, coastal villages and the network of stone lined paths that connect them in the Tarague Embayment. The sites include 66-07-1614, a Latte Period coastal village at Tarague, 66-07-1637, an upland agricultural site, 66-07-1638, a well-preserved section of the network of stone-lined path that connect the agricultural sites with coastal villages and fresh water sources. These sites will be used to develop the context for these and similar sites in the Tarague Embayment. The fourth nomination is a multi-component site near the Known Distance Rifle Range. The site is important for providing early dates that demonstrate pre-latte activities on the Northern Plateau.	2022 update: contract was awarded; kick-off meeting and site visits were completed in September 2022. Fieldwork was completed in December and consultant is preparing the nominations. Draft documents are being reviewed by Camp Blaz.
2023	MCBCB is currently selecting candidates for nominations in 2023	

#### **Stipulation VII.C.4.a: Cultural Repository Funding**

- DON advocated for funding and secured Congressional authorization. Office of Economic Adjustment granted \$12 million to Office of the Governor.
- Construction has been completed on the University of Guam campus.
- Tour of the completed facility was offered during the Annual Workshop in August 2022.
- The Cultural Repository hosted an Open House presentation on the status of Cultural and Natural Resource Mitigations in early 2023.
- When the facility is staffed and ready to receive collections, JRM will begin transferring collections to the facility.
- Note that the facility is intended to house all Guam collections, not just Federal collections.

#### **Stipulation VII.C.4.b: Museum Complex Advocacy**

- DON provided a white paper explaining the effort to secure funding and to meet the commitment for advocacy. No federal agency was able to provide funding for a museum complex.

#### **Stipulation VII.D: National Park System on Guam**

- No impacts to NPS related to the military relocation have been reported.



<b>Stipulation VIII: Tinian Mitigations</b>
<ul style="list-style-type: none"> <li>• Tinian mitigations stipulated under the 2011 PA remain inactive.</li> </ul>

<b>Stipulation IX: Provide SHPO Liaison</b>
<ul style="list-style-type: none"> <li>• The position is funded through the Center for Environmental Management on Military Lands (CEMML) at the University of Colorado.</li> <li>• The Liaison position is stationed full-time at SHPO.</li> <li>• The position has been vacant since departure of the last liaison.</li> <li>• Secretary of Interior (SOI)-qualified archaeologists from Camp Blaz are filling-in as temporary liaisons pending on-boarding of a permanent liaison through the CEMML program.</li> <li>• As March 2023, an SOI qualified archaeologist has accepted the position and is scheduled to onboard in the third quarter of 2023.</li> </ul>

**Section V will include a list of projects to be completed in the next reporting period, including the determination of effect and any mitigation measures required.**

**Note: Projects listed in Section V are anticipated during the next reporting period; however, timing may vary due to scheduling decisions.**

<b>J-008 -1 Firefighter Training Facility</b>
<ul style="list-style-type: none"> <li>• March 2011: J-008-1 was among the list of projects in Stipulation V.A.1.a of the Programmatic Agreement that were found to have no effect on historic properties.</li> <li>• 6/8/2021: Fire station location within the main cantonment was previously consulted on; however, the location of the training area associated with the fire station had not been determined at that time.</li> </ul> <p>Potential locations were considered and a training area was selected near the entrance to NCTS Finegayan. This is the location of athletic facilities constructed between the mid-1960's and the late 1980's. A PA Memo is currently being prepared.</p>

<b>J-755 Operations (RC 2013-1101)</b>
<ul style="list-style-type: none"> <li>• Operations were consulted on in 2019 (PA Memo 1)</li> <li>• SHPO responded with rejection of previous surveys and a demand that the entirety of Andersen South be re-surveyed.</li> <li>• MCBCB committed to archaeological monitoring of ground disturbance in the 2018 Resolution Agreement</li> <li>• A second investigation will further define site boundaries and search areas shown on old maps shown to have been the locations of ranches (<i>lanchos</i>).             <ul style="list-style-type: none"> <li>○ The primary objective addresses two goals:                 <ul style="list-style-type: none"> <li>▪ 1) Define the extent of previously discovered areas within the Convoy Vehicle Operations Course (CVOC) and the Hand Grenade Range (HGR)                     <ul style="list-style-type: none"> <li>• This will provide information on the extent of sites beyond the construction APE (but within military jurisdiction).</li> </ul> </li> <li>▪ 2) Locate, verify and, if present, assess conditions of possible <i>lancho</i> sites recorded in the 1913-1914 Corps of Engineers map.</li> </ul> </li> </ul> </li> </ul>



- Documented historic properties are within the investigation area
- Currently, a draft work plan is being reviewed by MCBCB.

#### **P-745 Relocation of Guam National Wildlife Refuge (RC2022-0283)**

A Memorandum of Agreement between DoD and US Fish & Wildlife Service (USFWS) requires relocation of existing USFWS facilities at the Ritidian Unit of Guam Refuge to a location within the refuge, but outside of the Surface Danger Zone of the live-fire range on the plateau overlooking Ritidian Point. The existing facility will be demolished, cleared and planted in native vegetation. The buildings currently used by USFWS were originally constructed by Navy as part of an underwater sensor station to detect movement of submarines.

- Ritidian is among the most sensitive locations on Guam for archaeological resources.
- Careful planning is required to avoid or minimize adverse effects to those resources.
- MCBCB began consultations with Guam SHPO in February 2022.
  - 2/25/2022: SHPO reviewed the Work Plan for initial investigations to identify historic properties in the APE and provided comments and recommendations.
  - In May 2022, SHPO commented on a revised work plan.
  - In June 2022, SHPO concurred with a revised work plan addressing their comments.
  - 8/19/2022: Archaeological survey fieldwork was completed
  - 11/17/22: Draft Technical Report delivered to MCBCB
  - 12/2/2022: Site Condition Assessment Report identified sources of potential impacts to historic properties near the proposed APE
- NEPA Planning for an Environmental Assessment is in progress
- Currently designing the new USFWS building to avoid historic properties to greatest extent possible while retaining public access to Ritidian Beach.

#### **P-871/U871 CBRNE facility FY24**

- Proposed location is along the western perimeter of Camp Blaz cantonment.
  - Facility will provide training for response to Chemical, Biological, Radiological, Nuclear and High Yield Explosives.
  - Construction will occur on ground prepared by J-001B Utilities and Site Improvements.

#### **P-187 Brown Tree Snake Exclusion Barrier South**

- The project includes construction of an exclusion barrier to limit movement of brown tree snakes, rats, cats, and ungulates such as feral pigs and deer.
  - October 7, 2021: A PA Memo for design studies for this project was submitted.

#### **P-608 Design Studies for Earth Covered Magazines and Ordnance Pad**

- This project proposes to conduct project design efforts including geotechnical and topographic surveys for eight (8) earth covered magazines and one (1) ordnance pad.
  - June 7, 2019: A PA Memo for design studies for this project was submitted.
  - The location of the earth covered magazines has been shifted from Fena Lake to Parsons Road to reduce environmental impacts.



**Section VI shall include maps showing the project areas and DoD project numbers, as well as any portions of the APE where sensitivity designations have been changed as a result of further identification and evaluation efforts.**

**NOTE: Regarding changes in sensitivity designations, footprints of projects such as J-001B and P-715/735 that were cleared and graded will become low to no probability; however, discoveries made within those areas will be considered when assigning sensitivity designations to locations in similar environments. Revised sensitivity maps are being developed by JRM.**



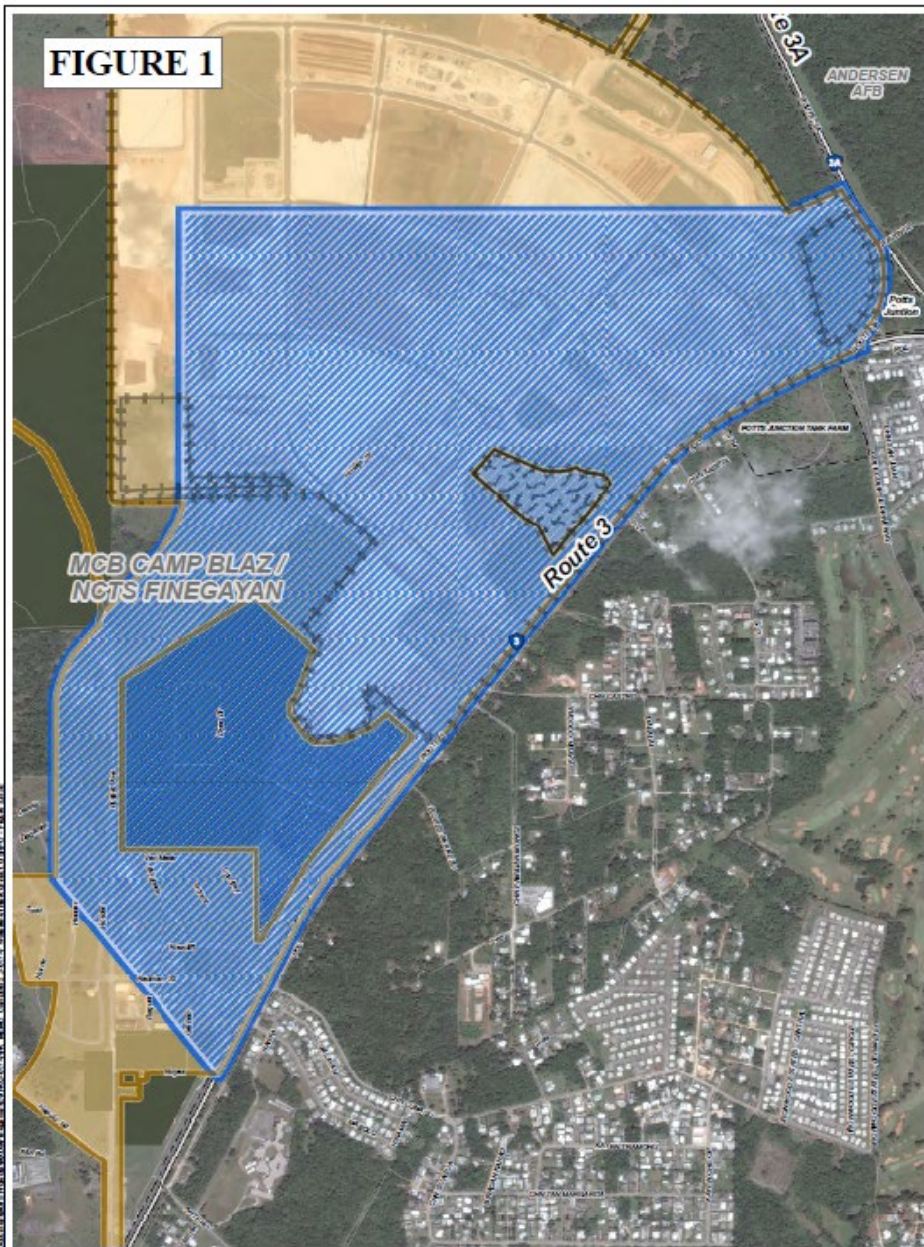
## J-609 Apra Harbor Embarkation Facility



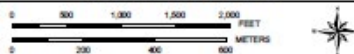
## J-017V - Waterline Connection



FIGURE 1



Camp Blaz - J-017-V, Waterline Interconnect  
- PA Memo - Construction Area









PREPARED BY:  
Naval Facilities Engineering Command Pacific Division  
State Program Management Office  
DATE: 26 Feb 2023



Coordinate System: Geographic  
Projection: NAD  
Datum: NAD 83  
Units: Meter

### Legend

- |   |   |   |                               |
|---|---|---|-------------------------------|
|  | J-017-V Waterline Interconnect - APE                                    |  | J-001B (US&I) Contract Limits |
|  | Sinkhole area not included in the J-001B PA memo (per the 2017 PA memo) |  | Guam Hwy.                     |
|  | PA Memo Area J-001B (2014, 2017, 2021)                                  |  | Military Installations        |

This figure depicts the overall project location. The actual size of the APE is 26.7 acres as described in the text of this FA memo.

NAMBU APE  
J017-V - 26.7 ac.



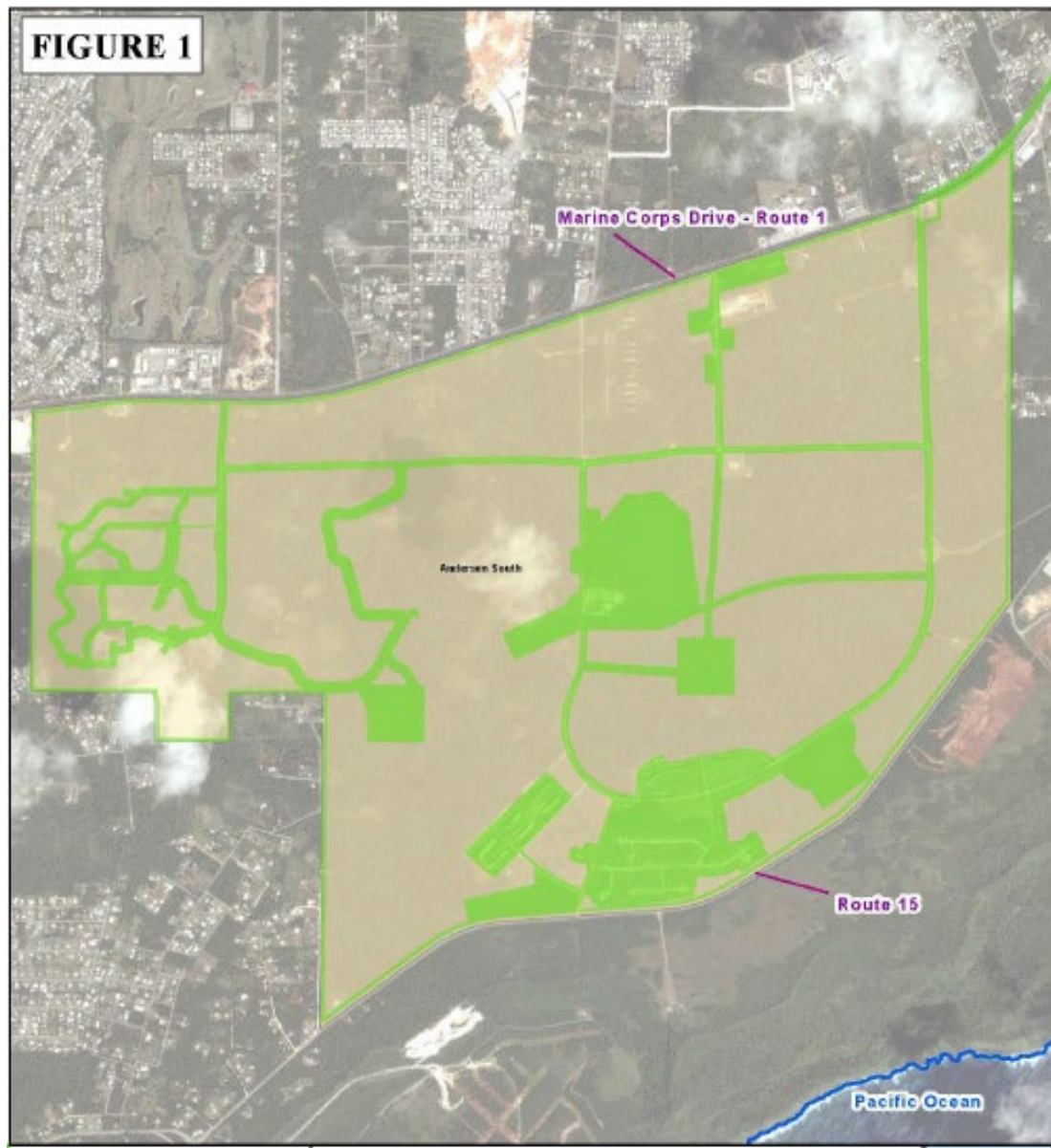


## J-008-I Firefighter Training Facility





## Survey of Urban Combat Training Range Complex



Green: Construction Footprint (original)

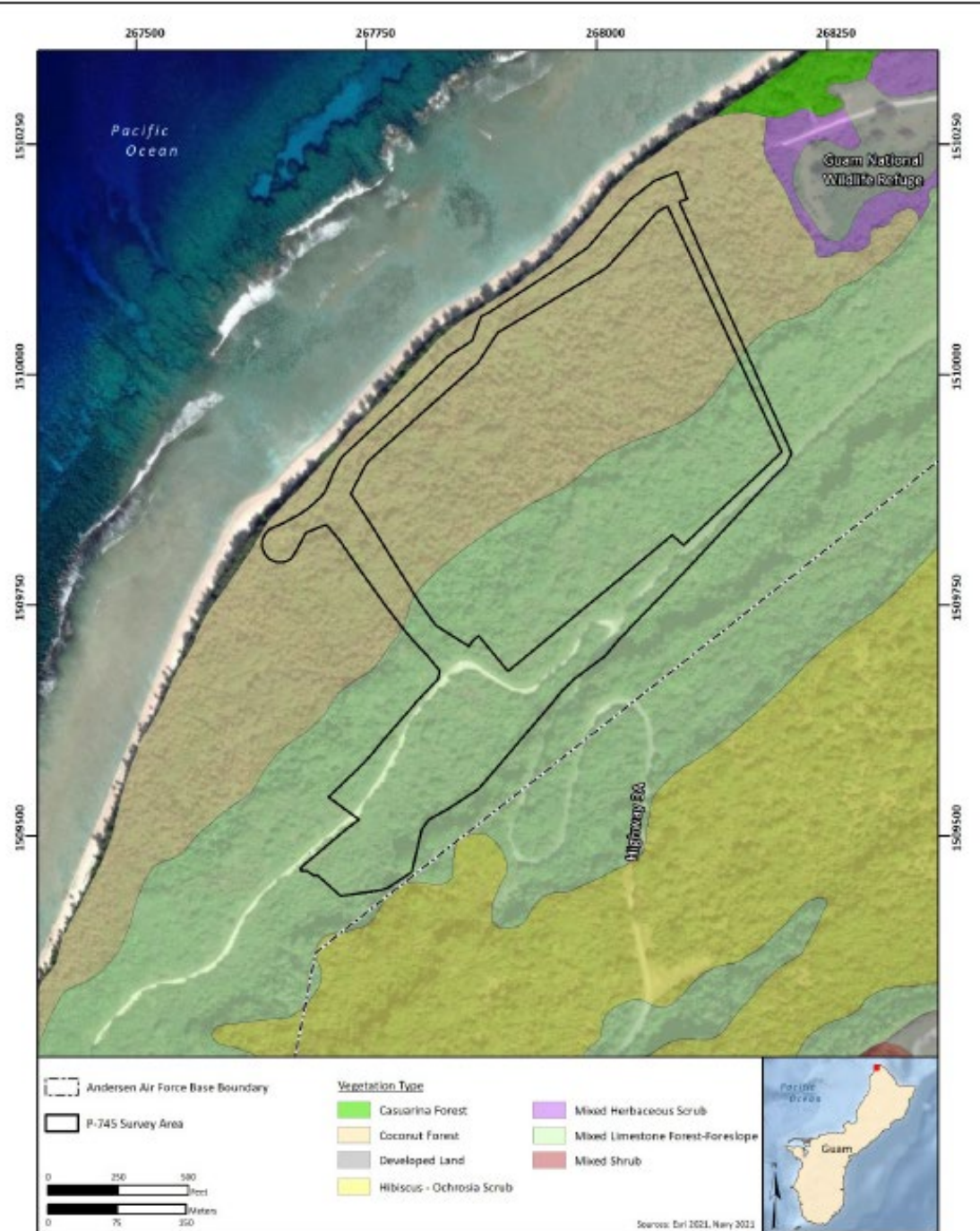
Tan: Areas not affected by J-755 Construction

Entirety of Andy South is designated as training area

Proposed archaeological investigation will include surface and sub-surface methods at selected previously discovered locations to better define extent of sites. Investigation includes additional efforts to locate and document multiple *lancho* shown on early 20<sup>th</sup> century maps.



## P-745 Relocation of Guam National Wildlife Refuge Facility at Ritidian



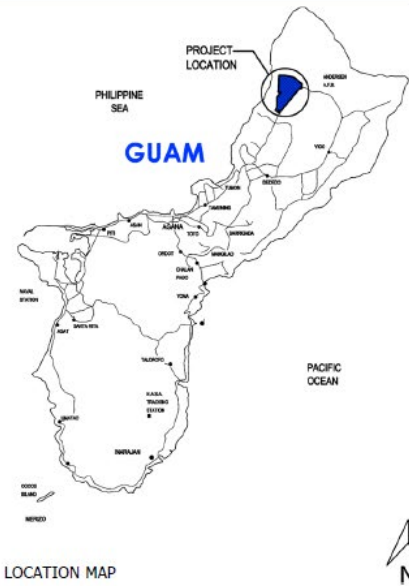
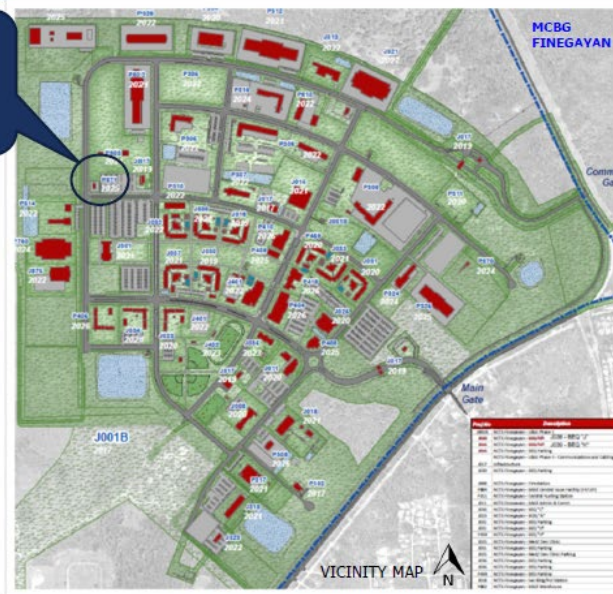
**Figure 3.1-3. Vegetation Present within the Survey Area**



## P-871U CBRNE Training Facility

### LOCATION AND VICINITY MAP

P-871U



P871 CBRNE TRNG MCBG



**NAVFAC**  
Naval Facilities Engineering Command

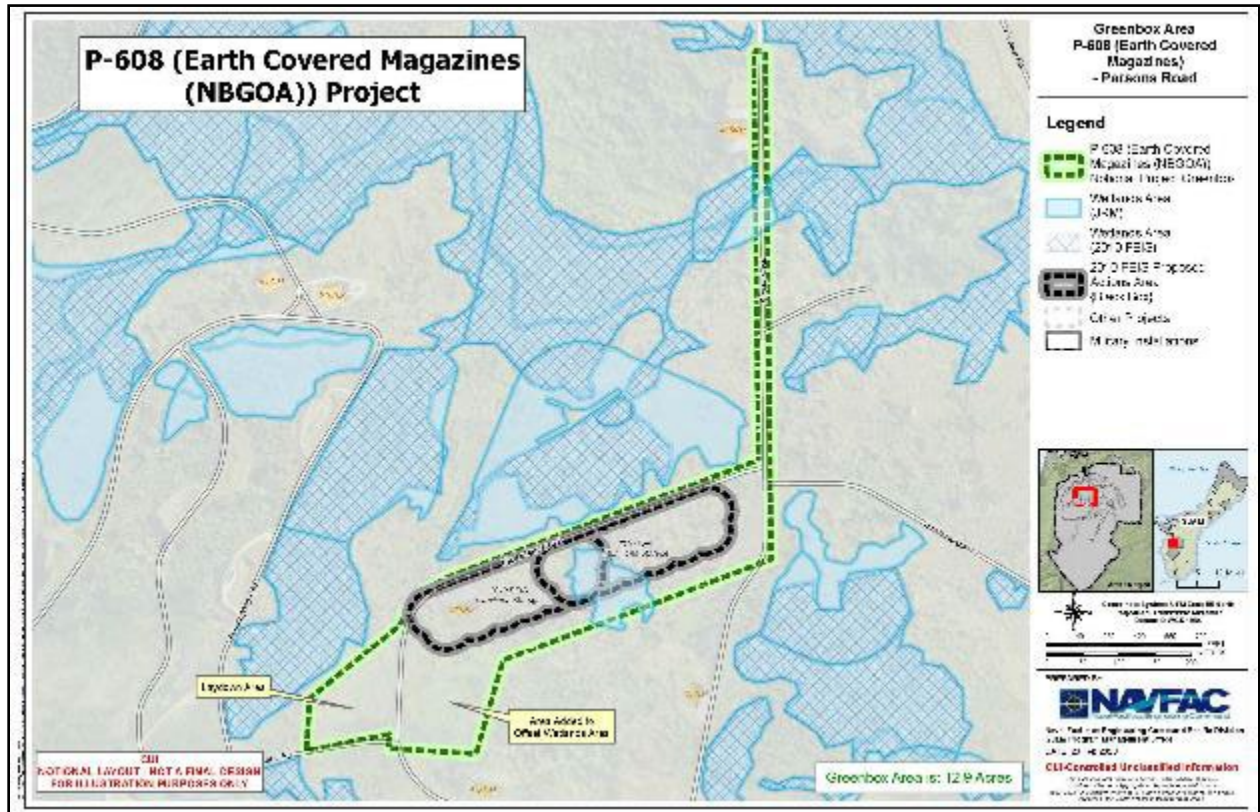


## P-187 Brown Tree Snake Exclusion Barrier South



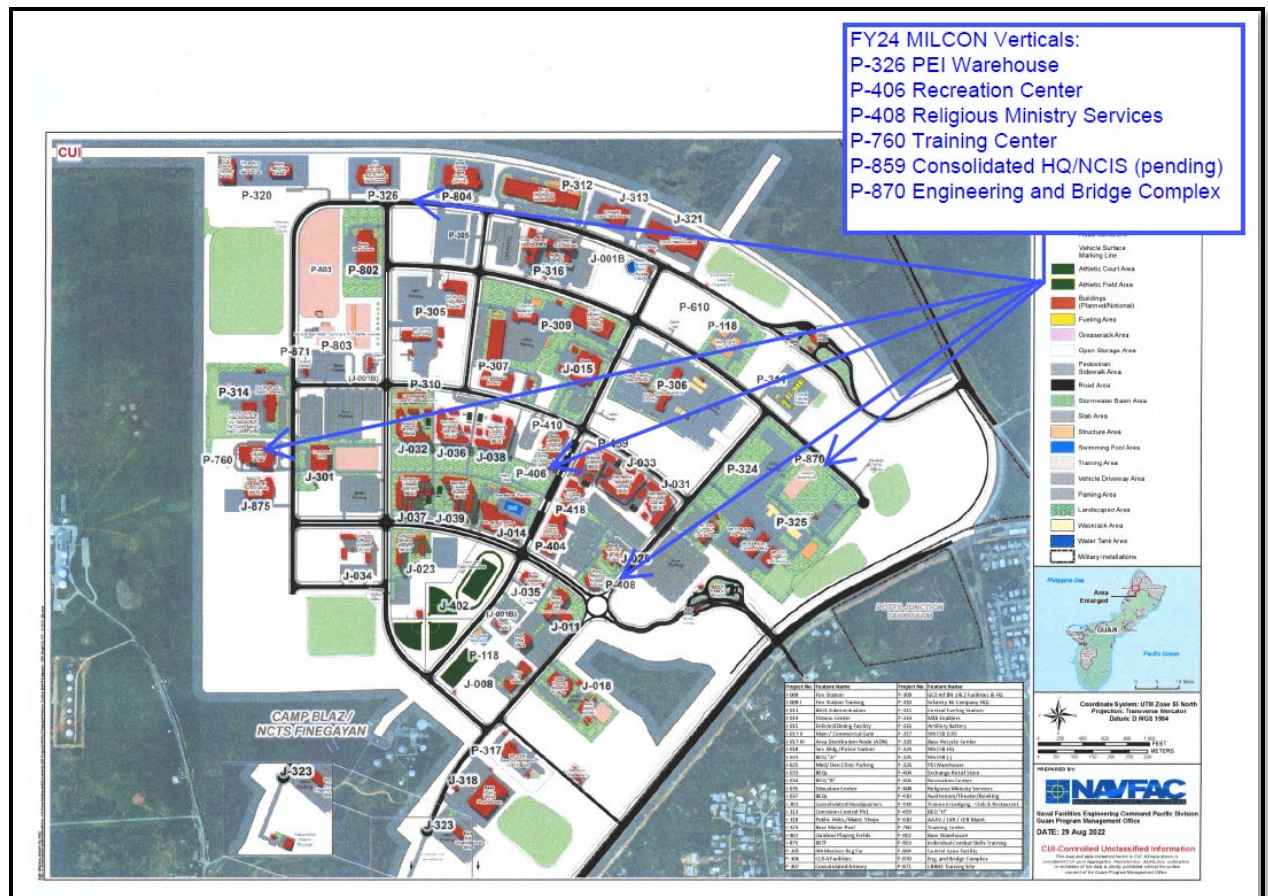


## P-608 Design Studies for Earth Cover Magazines and Ordnance Pad





### FY24 MILCON Vertical Projects (Main Cantonment)





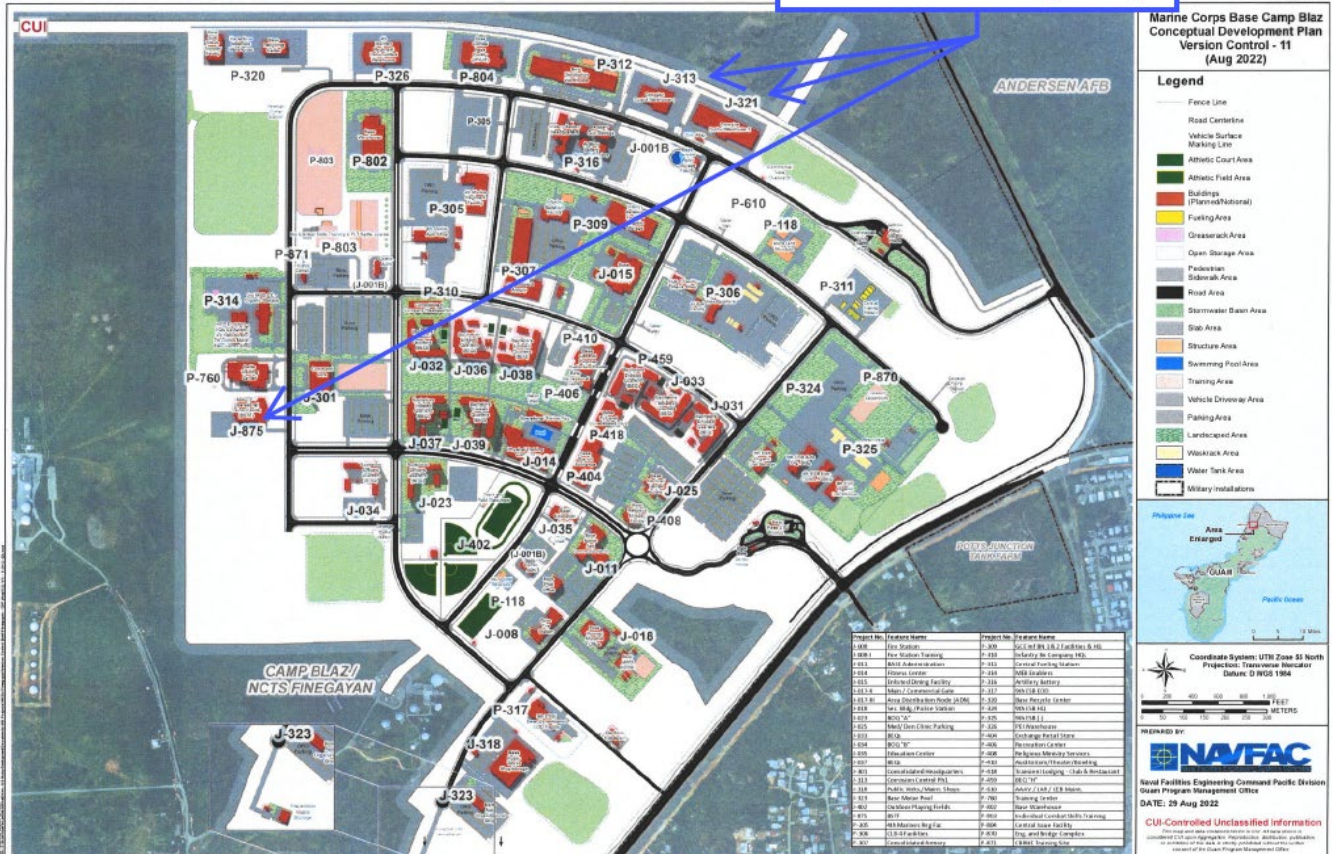
## FY24 Mamizu Vertical Projects (Main Cantonment)

### FY24 Mamizu Verticals:

J-313 Corrosion Control Phase 1

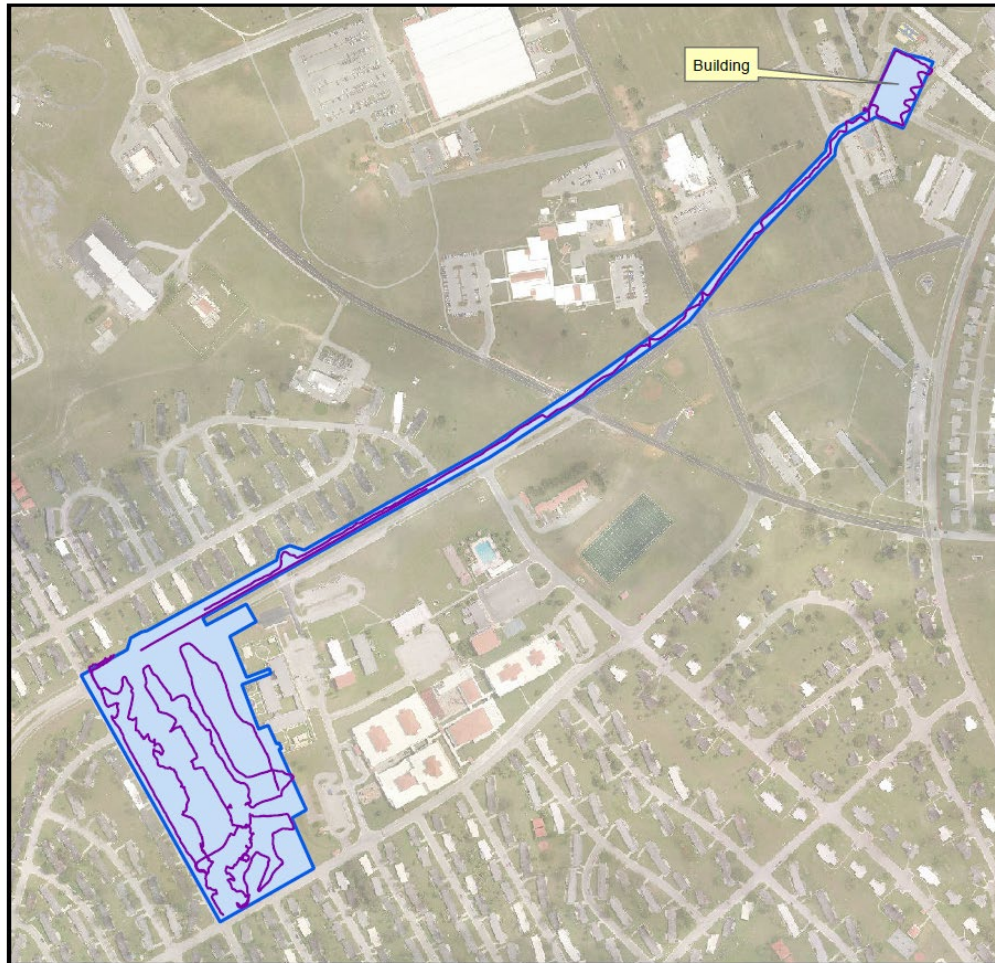
J-321 Corrosion Control Phase 2

J-875 Battle Staff Training Facility






### P-415 Child Development Center, Andersen Air Force Base



MAP TITLE  
P415 CDC T&E + HVT Survey  
MAP DATE  
08 November 2022

LOCATION / INSTALLATION  
AAFB

## Map Key

— Survey Lines 20221108  
 P415 Greenbox (Updated Nov2022)

MAP PROJECTION & SCALE

DATUM: WGS 1984  
PROJECTION: TRANSVERSE MERCATOR  
COORDINATE SYSTEM: UTM ZONE 55N



MARINE CORPS BASE CAMP BLAZ  
PUBLIC WORKS DEPARTMENT  
ENVIRONMENTAL DEPARTMENT  
CONTACT: (671) 355-1340

DISCLAIMER: THIS MAP AND DATA CONTAINED HEREIN IS FOR OFFICIAL USE ONLY. ALL DATA SHOWN IS CONSIDERED UNCLASSIFIED SENSITIVE UPON AGGREGATION, REPRODUCTION, DISTRIBUTION, PUBLICATION, OR EXHIBITION OF THIS DATA. STRICTLY PROHIBITED WITHOUT THE WRITTEN CONSENT OF THE JOINT REGION MARIANA GEONESS CENTER (JRC). THE JRC DOES NOT ATTEST TO OR



Section VII of this annual report shall include the results of all dispute resolution efforts under Stipulation XIII.

No new disputes were initiated during the reporting period.

<b>P-715 Live Fire Training Range Complex</b>
<ul style="list-style-type: none"><li>• Archaeological monitoring in P-715 had concluded with the completion of construction prior to the reporting period.</li></ul>

<b>J-001B Utilities and Site Improvements</b>
<ul style="list-style-type: none"><li>• Archaeological monitor at continued to provide weekly reports. By the end of this reporting period, monitor schedule was reduced to part time, due to decrease in activities requiring monitoring.<ul style="list-style-type: none"><li>○ Monitor remained on call throughout the reporting period; however, ground disturbances requiring monitoring were not occurring on most days.</li><li>○ Monitors assisted with replacing protective fencing where needed and taking measures to protect HR locations from frequent heavy rains and flooding.</li><li>○ Monitors also responded to inspect paths related to Forest Enhancement (FE) in the jungle north of the cantonment area. This was to ensure that laying of irrigation lines did not impact sites. There was no ground disturbance associated with these FE activities.</li><li>○ Monitor assisted archaeological crews working at HR locations.</li><li>○ Monitor acted as a liaison between archaeological team and GOJV regarding fencing maintenance, measures to protect HR locations from frequent heavy rains, and providing access to areas, such as HR26.</li><li>○ Monitor observed removal of HR-21 following completion of investigation and release of the area to construction.</li><li>○ Monitor observed installation of fence and water line near HR-1 monument.</li></ul></li></ul>

<b>P-103 Water Well Construction</b>
<ul style="list-style-type: none"><li>• Construction of the water well field development project is currently underway and is being monitored per the 2018 agreement</li><li>• No archaeological sites have been defined; however, one possible human bone fragment was discovered; SHPO was informed and the location was fenced pending further investigation.<ul style="list-style-type: none"><li>○ Update: investigation of the location was completed in February 2023, producing only confirmed deer bones.</li></ul></li></ul>

<b>P-735 Multi-purpose Machine Gun Range</b>
<ul style="list-style-type: none"><li>• Archaeological monitoring continues in at NW Field, Andersen AFB.<ul style="list-style-type: none"><li>○ Monitors are present in the construction area per the 2020 agreement.</li><li>○ No new discoveries of sites or HSR were made during this reporting period.</li><li>○ Small, isolated potential features were investigated and documented</li></ul></li></ul>



<b>J-755 Urban Combat Training Range Complex (Construction Phase)</b>
<p>Archaeological Monitoring continues in J-755.</p> <ul style="list-style-type: none"> <li>• Monitors documented and collected a few isolated artifacts as they monitored these activities: <ul style="list-style-type: none"> <li>○ Stump pulling along the southern perimeter road,</li> <li>○ Fence installation at various locations,</li> <li>○ Repairs of Protective Fences around locations pending archaeological investigations,</li> <li>○ Trenching for subsurface conduit,</li> <li>○ Monitoring of Project P-51 construction along road within Andy South</li> </ul> </li> </ul>

<b>P-290 Construction of Earth Covered Magazines and Inspection Pads</b>
<ul style="list-style-type: none"> <li>• Professional oversight, including site checks by a DoD archaeologist is a PA requirement. <ul style="list-style-type: none"> <li>○ 21 December 2022: Camp Blaz archaeologists discovered potential cultural deposits and human bone fragments in the P-290 project footprint. The location of a planned open munitions pad had been shifted away from a previously identified historic property to an adjacent area that had been shovel tested prior to construction; however, small bone fragments determined to be human and organic soil stains were discovered 23 Dec 2023. <ul style="list-style-type: none"> <li>▪ The contractor has stopped work in the vicinity of the discoveries and the locations have been fenced pending archaeological investigation of the area.</li> <li>▪ The discovery is close to the previously identified site and may be a previously undocumented extension of that site.</li> <li>▪ The investigation will determine if this is a new site or part of the previously documented site.</li> <li>▪ Contracting for investigation of the locations is in progress.</li> </ul> </li> </ul> </li> </ul>

**Section VIII of this report will provide summary data about public access from the Access Plan.**

The following updates were provided during the 11<sup>th</sup> Annual Workshop:

- Full-time JRM Access Plan Coordinator, Mrs. Shayna Lopez, is now onboard
- Alternate Mangilao Staging Area for Cultural Timber identified, with thanks to Mangilao Mayor Ungacta and Guam Dept. of Ag. Director Chelsa Muña
- Tweed's Cave Visit (June 2023) Sec 106 consult letter concurred upon by SHPO for plaque install proposed by Artero-Tweed group and MCBCB
- Since Sept. 2022:
  - 94 pieces High Value Trees (HVT) delivered to the Guam Raceway Park Staging Area
  - 44 pieces HVT delivered to the newly identified Mangilao staging area
  - Two individuals (one foreign national and one Army veteran) were processed through the PAP to tour the War Dog Cemetery, Clipper Landing, and Sumay Village on NBG
  - A historical tour company representing over 100 individuals requested access



## **APPENDICES**

- A. Archaeological Discoveries
- B. Discoveries of Human Remains



APPENDIX A: TABLE OF ARCHAEOLOGICAL SITE DISCOVERIES (POTENTIAL HISTORIC PROPERTIES)

DATE	DISCOVERY (AREA) NUMBER	POTENTIAL ARCHAEOLOGICAL AREA, DESCRIPTION UPON DISCOVERY All discoveries are fenced/flagged, notifications are sent to appropriate authorities, with construction paused in the immediate vicinity of the archaeological find (construction work continues elsewhere).
MILCON P-715		
3/19/2019	P-715-001	Surface scatter of Latte Period ceramics at NE corner of KDRR discovered during pre-clearing recon of area
5/8/2019	P-715-002	Ca. 400 Latte Period ceramic sherds in stump pull in SE corner of KDRR near a previously data recovered site
6/3/2019	P-715-003	Large surface artifact scatter running SW to NE across KDRR
6/12/2019	P715-004	Small area with artifact scatter, including <i>lusong</i> (mortar) and 100+ ceramic sherds located in the range road between pistol range and MRFR
7/16/2019	P-715-005	Latte Period ceramic scatter including rim sherds, an extension of a previously data recovered site 66-08-2530 in MRFR
7/29/2019	P-715 Areas 5A and 5B	Areas in SE and SW sides of MRFR. Variety of surface artifacts and dark stains assumed to be indications of subsurface cooking pits
10/15/2019	P-715-006	Possible fire feature, later ruled out
MAMIZU J-001B		
12/5/2018	J-001B-001	Archaeological surface scatter and possible cooking pits
1/21/2019	J-001B-002	Archaeological surface scatter, stone tools, ceramics suggest potential prehistoric habitation site. Presence of late 19th century bottles and ceramics
5/23/2019	J-001B-003	Immediately adjacent to north and east boundaries of 66-08-2303 (Magua Settlement Site) and are almost certainly part of that sites. Features (probable cooking pits) are visible in both areas
5/29/2019	J-001B-004	
6/3/2019	J-001B-005	Dark soil feature (possible cooking pit) located some distance east and north of 66-08-2303; not geographically part of the Magua site. Included in notification to SHPO for 003 and 004
7/18/2019	J-001B-006	Latte Period ceramic scatter, lithics (stone tools), fire affected soil, metal, glass, boot sole and boar tooth. Geographically distant and north of 66-08-2303.
8/18/2019	J-001B-007	Latte Period ceramics, lithics and fire affected soil (probable indicators of cooking pits). Located between 66-08-2303 and Discovery Area J-001B-006.
10/2/2019	J-001B-008	Latte Period ceramics, lithics, and fire affected soil. Modern glass present on surface.
6/1/2020	J-001B-009	Area E, surface scatter of 50+ latte ceramic sherds, a broken <i>lusong</i> , marine shell ( <i>tridacna</i> ) and volcanic stone fragments



8/19/2020	J-001B-010	Surface artifact scatter and three soil stains with fire affected limestone pebbles in an area approximately 30 x 80 meters in Area E.
3/31/2021	J-001B-011	More than 20 features within an area of approximately 100 x 150 meters in the western portion of Area D. Several of the features are black soil stains that contain burned coconut shell, fire affected limestone pebbles, and surface artifact scatters.
MAMIZU J-755		
3/19/2020	J-755-001	Latte Period ceramics, stone tools, slingstone in Convoy Vehicle Operator Course (CVOC) at western end of Andy South
3/25/2020	J-755-002	100+ ceramic sherds in 100 X 20 meter part of perimeter fence corridor in southern Andy South
4/2/2020	J-755-003	Latte Period ceramic scatter and surface stain that may represent combustion feature (CVOC)
5/1/2020	J-755-004	30-40 ceramic sherds, slingstone, pestle and indeterminate lithic fragments (CVOC)
5/4/2020	J-755-005	Latte Period ceramics, slingstone, stone tool fragments, possible latte elements (CVOC)
5/15/2020	J-755-006	Ca. 90 ceramic sherds, two slingstones, groundstone fragment, two features, faunal and human bone (HSR)
5/19/2020	J-755-007	Ca. 50 ceramic sherds, groundstone fragments, slingstone, marine shell (CVOC)
5/28/2020	J-755-008	Latte ceramics, ground stone fragment and soil stain (CVOC)
6/4/2020	J-755-009	30+ ceramic sherds, ground stone fragments, marine shell, flaked stone tool, soil stain (CVOC)
6/10/2020	J-755-010	Dark soil stains, possible <i>lusong</i> fragment, ground stone tool fragments and ca. 30 ceramic sherds (CVOC)
6/10/2020	J-755-011	25+ ceramic sherds, three soil stains (possible features), ground stone tool fragment and marine shell (possible worked tridacna shell) (CVOC)
7/14/2020	J-755-012	Surface scatter of 80-100 ceramic sherds, 7 groundstone tools or fragments and three soil stains (potential features) were found in an 80 x 120 meter area at the SE edge of the hand grenade range.
8/20/2020	J-755-013	Surface scatter of ceramics and lithics in an area 45 x 75 meters (CVOC)
12/15/2020	J-755-014	Approximately 15x20 meters wide consisting of a surface scatter of Latte Period ceramics, marine shells, lithic tool fragment (CVOC)
6/4/2021	J-755-015	Approximately 50x20 meters wide containing at least 4 soil stain features and surface scatter of multiple artifact classes; located south of CVOC
6/22/2021	J-755-016	Approximately 40x20 meters wide containing 2 thermal features, groundstone, and at least 25 pre-contact ceramic sherds; located south of CVOC
8/3/2021	J-755-017	Width of corridor (20m) by ca 60 meters known size; contains at least two thermal features thought to represent earth oven and ca. 25 ceramic sherds.



8/21/21	J-755-018	Area is approximately 15 meters X 54 meters containing a surface scatter of stone and shell tool fragments, ceramic sherds and a human bone fragment (HR7).
12/8/21	J-755-019	Dark soil stain approximately 20 meters long running along west perimeter fence corridor. Feature contains pre-contact ceramics and ground stone tool fragments. Archaeological investigations determined that this dark soil is a secondary deposit; however, a combustion feature was discovered in one of the shovel tests placed in the area.
2/11/2022	J-755-020	12 X 25 meter area in the east perimeter road corridor that contains four concentrations of ceramic sherds and at least three (3) possible combustion features.
3/25/2022	J-755-021	5 X 25 meter area in Road M east of J-755-017. Two soil stains, with fire affected coral and ceramics and human skeletal remains are present.
MILCON P-735		
1/20/2022	EOF REPORT	Three archaeological areas were subjected to archaeological data recovery.
END OF RECORD (DEC 31, 2022)		



## APPENDIX B: DISCOVERIES OF HUMAN REMAINS

<b>J -001B (HR-1 and Area D )</b>	
<p>Burials at J-001B Area D HR sites: HR-20, HR-12; HR-11, HR-22, and HR-25 are being preserved in place. Due to the location of HR-13 and HR-24 to these sites, HR-13 and HR-24 will be preserved in place along with the 5 sites with burials.</p> <ul style="list-style-type: none"> <li>• 11/30/2022: MCBCB leadership selected that Course of Action (COA) following the 30 NOV 22 brief.</li> <li>• 12/14/2022: JRM to confirmed COA following brief.</li> <li>• The project redesign to follow will result in those areas plus HR-13 and HR-24 being preserved in place.</li> <li>• Planners have already developed a draft revised perimeter fence alignment to exclude those areas from the future 9th ESB compound. Archaeological contractor began preparing burials at HR-12 and HR-20 for preservation in place on 12 DEC, completed on 13 JAN and began working the other areas</li> </ul>	

DATE	DISCOVERY NUMBER	Potential Human Remains Description Upon Discovery	SHPO Formal Notification
<b>MILCON P-715</b>			
9/20/2019	P-715-HR-1	Splintered fragments of human humerus, disturbed context of cleared area. Initial screening for preliminary investigation concurred on by SHPO to be performed by P-715 sub-contractor archaeological firm (in scope under data recovery mod). Preliminary investigation identified 22 fragments of HSR in 1 x 1 meter unit. HSR included cranial fragments, mandible fragment and two teeth.	9/25/2019
9/26/2019	P-715-HR-2	Splintered fragments of human illium and fibula, disturbed context of cleared area.	9/30/2019
10/2/2019	P-715-HR-3 P-715-HR-4	Two splintered fragments of human tibia, disturbed context of cleared area within same recovery area.	10/9/2019
10/11/2019	P-715-HR-5	Grid AU106: 26 fragments of HSR found, majority cranial fragments with femur and other long bones	10/18/2019
10/15/2019	P-715-HR-6	Grid AM116: three long bone fragments	10/18/2019
10/29/2019	P-715-HR-7	Grid AS112: two long bone fragments	10/30/2019
10/29/2019	P-715-HR-8	Grid AS 110: cranial and long bone fragments, teeth	10/30/2019
11/15/2019	P-715-HR-9	P-715-005B: 2 cm x 2 cm cranial vault fragment with smaller related pieces	11/18/2019
<b>MAMIZU J-001B</b>			



1/9/2020	J-001B-HR-1	Incised tooth was discovered during data recovery in discovery area J- 001B-002. Tooth was found in Grid AG26. Discovery triggered further investigations per procedure agreed upon in consultation with SHPO.	1/24/2020
3/9/2020	J-001B-HR-2	Grid Q20, within 66-08-2303: cranial fragments, fragments of long bones tentatively identified as radius and ulna.	3/12/2020
3/25/2020	J-001B-HR-3	Within 66-08-2303: single small fragment of human cranium on graded surface	4/15/20 delay due To COVID
5/29/2020	J-001B-HR1-BR1	While following the SOPs, the archaeologists encountered an in-situ burial. This was designated as Burial 1. Consultation with SHPO resulted in concurrence to expose, but not remove the remains in an effort to determine age and ethnicity.	6/5/2020
6/3/2020 confirmed 6/4	J-001B-HR-4	Grid N19, Data recovery area J-001B-003: single small fragment of human cranium on graded surface	6/9/2020
6/23/2020	J-001B-HR-5	Human ulna fragment found in Grid Q17 within 66-08-2303 (Mågua Settlement Site)	7/2/2020
7/15/2020	J-001B-HR1-BR2 and BR3	Pit feature containing fragments of human bone representing at least two individuals.	7/20/2020
7/17/2020	J-001B-HR1-BR4	These remains are believed to represent a disturbed burial due to their proximity to Burials 1-3. This was designated as Burial 4.	7/28/2020
8/10/2020	J-001B-HR-6	Human femur fragment found in Grid AH21, located in Area E	8/17/2020
8/18/2020	J-001B-HR-7	Human cranium fragment found in Grid AF22, located in Area E	8/24/2020
8/21/2020	J-001B-HR-8	Human tooth found in Grid AE22, located in Area E	8/24/2020
9/29/2020	J-001B-HR-9	Femur fragment at Area E.	10/1/2020
12/29/20 Confirmed as HSR 1/4/21	J-001B-HR-10	Single bone fragment on surface within ungulate fence corridor. Following notification, archaeological investigation (underway as of 3/26/21) has discovered additional fragments in the area.	1/4/2021
2/4/2021	J-001B-HR-1	Additional human skeletal remains were discovered in a non-burial context while monitoring work for the Sabanan Fadang burial monument.	2/10/2021



4/13/2021	J-001B-HR-11	Midshaft long bone and smaller fragments; partial mandible with two intact molars at Area D. Additional burials were later found during the investigation at HR-11; all will be preserved in place.	4/16/2021
5/13/2021	J-001B-HR-12	Human cranial fragment at Area D	5/17/2021
	J-001B-HR-12-BR1	Primary burial context with only portions of the lower elements of the lower limbs remaining. The human remains appear to be from the same individual. The presence of one potential betel nut-stained tooth, Latte Period ceramics and lithics suggests CHamoru ancestry.	10/13/2021
5/17/2021	J-001B-HR-13	Approximately 20 small fragments of humerus at Area D	5/25/2021
5/20/2021	J-001B-HR-14	3 small human bone fragments, including an intermediate phalange at Area D	6/1/2021
5/26/2021	J-001B-HR-15	Medial femur fragment at Area D	6/1/2021
6/3/2021	J-001B-HR-16	Human cranial fragments at Area D	6/3/2021
6/11/2021	J-001B-HR-17	Human tibia midshaft fragment at Area D	6/22/2021
6/11/2021	J-001B-HR-18	Small human fibula mid-shaft fragment at Area D	6/22/2021
5/20/2021	J-001B-HR-19	Isolated fractured human incisor discovered during wet screening in the lab (post-excavation) at Area D	6/29/2021
5/27/2021	J-001B-HR-20	Very small indeterminate bone fragments, including less than 1cm distal phalanx discovered during wet screening in the lab (post-excavation) at Area D	6/29/2021
	J-001B-HR-20-BR1	Multiple remains, including an adult and sub-adult, within undulating limestone. The presence of potential betel nut-stained teeth, Latte Period ceramics and Tridachna shell, and absence of historic material suggests that the historically-disturbed burial dates to the Latte Period.	9/21/2021
6/2/2021	J-001B-HR-21	Isolated human molar at Area D	6/29/2021
	J-001B-HR-22-BR-1 and BR-2	Burial 1 (12/30/2021): three concentrations of human skeletal remains. Two concentrations were disturbed to the extent that they were not considered to represent in-situ burials. The third, although disturbed, represents a partially in-situ burial. Burial 2 (2/11/2022 SHPO): concentrations of human skeletal elements seemingly overlying intact elements in anatomical	BR-1: 1/3/2022 BR-2: 2/16/2022



		position, as well as elements in anatomical position which may also be somewhat displaced. There are at least 3 individuals observed.	
7/6/2021	J-001B-HR-23	Approximately 50 or more various bone fragments	7/22/2021
8/19/2021	J-001B-HR-24	One (1) human tooth during wet screening of a data recovery unit	8/27/2021
8/24/2021	J-001B-HR-25	One (1) human clavicle during routine monitoring	9/7/2021
	J-001B-HR-25-BR-1	Portions of articulated cranial and thoracic vertebral elements, clavicles, and ribs with associated lower limbs appear to be from one (1) adult individual.	12/2/2021
9/4/2021	J-001B-HR-26	Two (2) HSR fragments, specifically proximal ends of a radius and ulna, due northwest of prior discovery Area 3	9/9/2021
MAMIZU J-755			
5/15/2020	J-755-HR-1	HSR fragments identified in Discovery Area J-755-006	5/21/2020
11/5/2020	J-755-HR-2	HSR consisting of scapula and femur fragments at CVOC area. Disturbed context	11/12/2020
1/6/2021	J-755-HR-3	Human bone fragments consisting of patellae, scapula, rib, phalange, and 20 small unidentified fragments	1/7/2021
1/13/2021	J-755-HR-4	Approximately 25 fragments of human skeletal remains discovered during data recovery investigations Discovery Area J-755-006 (Area 6)	1/20/2021
5/11/2021	J-755-HR-4-BR1	Remains consist of articulated leg bones, possibly representing more than one individual and additional fragmented bones that may be associated with the burial.	5/17/2021
3/15/2021	J-755-HR-5	Multiple fragments of human skeletal remains including metatarsal, cranial fragments, teeth and fragments of long bones	3/17/2021
8/18/2021	J-755-HR-6	Human cranial fragment discovered in Area 16 (southern perimeter fence corridor.	8/27/2021
8/24/2021	J-755-HR-7	Probable human femoral fragment discovered in southwestern perimeter fence corridor.	8/27/2021



8/26/2021	J-755-HR-8	Fragmentary human skeletal remains found in Discovery Area 17.	9/9/2021
10/15/2021	J-755-HR-9	Fragmentary human skeletal remains found in Discovery Area 17.	10/25/2021
1/21/2022	J-755-HR-10	Fragmentary long bone fragment believed to be human	1/28/2022
2/4/2022	J-755-HR-11	Two probable HSR fragments found in a push pile	2/4/2022
2/17/2022	J-755-HR-12	Human femur and other bones, probable burial outside construction APE	2/22/2022
2/28/2022	J-755-HR-13	Weathered bone scatter that included fragments of femur and tibia	3/3/2022
3/28/2022	J-755-HR-14	Weathered bone fragments including tibia fragment believed to be human	3/30/2022
12/6/2022	J-755-HR-15	Probable femoral fragments and other bone fragments	12/9/2022
MAMIZU J-006			
3/19/2019	J-006-HR-1	Human femur Fragment discovered in fill	3/19/2019
4/1/2019	J-006-HR-2	Human clavicle fragment discovered in fill	4/3/2019
4/16/2019	J-006-HR-3	Human femur fragment discovered in fill	4/18/2019
5/9/2019	J-006-HR-4	Human long bone fragment discovered in fill	5/10/2019
WATER WELL SURVEY			
10/7/2013	HR-1*	In-situ human remains were discovered in burial context during shovel testing, exposed in effort to determine age and ethnicity in consultation with SHPO, but not removed, preserved in place. Determined to be Latte Period adult.	10/08/2013
10/8/2013	HR-2*	Disarticulated human skeletal remains (tarsals) were encountered during shovel testing near HR-1, test was expanded in effort to determine if other bones were present but no other bones were found. Bones were reburied where found per consultation with SHPO.	10/9/2013
Oct 2013	HR-3*	Human skeletal remains (adult Latte Period individual of moderate stature) were discovered in burial context during shovel testing. Consultations with SHPO resulted in reburial without removal.	Oct 2013
Oct 2013	HR-4*	Fragmentary remains of adult Latte Period individual were discovered during shovel testing. Remains were buried in place per consultation with SHPO.	Oct 2013
MILCON P-103			



1/25/2023	P-103-HR-1	Discovered by construction monitor, HR-1 consists of a single weathered bone fragment; SOP investigation did not produce additional bones.	1/25/2023
MILCON P-290			
12/23/2022	P-290-HR-1	Discovered cranial fragments	12/27/2022
4/27/2023	P-290-HR-2	Discovered cranial fragments	5/12/2023
MILCON P-735			
8/28/2021	P-735-HR-1	74 probable human skeletal remains from a shovel test pit associated with archaeological survey. Preliminary analysis identified some of the probable human remains to be from an ulna, cranial vault, and at least two from forearm mid-shafts within disturbed soils.	8/30/2021
PRE-CONSTRUCTION ARCHAEOLOGICAL SURVEY AND SUBSURFACE INVESTIGATIONS IN SUPPORT OF MAIN CANTONMENT			
N/A	Site 2303 Initial investigations	Laboratory Analysis Findings Surface collection: adult frontal bone (1 fragment) Trench 1, F26: adult forearm and humerus fragments (3 fragments) Trench 3, F27: long bone shaft fragment (1 fragment)	Report Jan 2017
N/A	Site 2305 initial investigation	Laboratory Analysis Findings F6: Forearm and humerus fragments (3 fragments)	Report Jan 2017
8/14/2016	Site 2307	EU1/F1: Field discovery of fragment of human clavicle	8/17/2016
N/A	Site 2308 initial investigation	Laboratory Analysis Findings F1: Adult human long bone fragments (19 fragments)	Report Jan 2017
END OF REPORT DECEMBER 31, 2022			